



THE UNIVERSITY OF  
MELBOURNE

# Open Information Session: Change in Access to Baillieu Library Collections

## Offsite Storage and Special Collections

The University of Melbourne acknowledges the Traditional Owners of the unceded land on which we work, learn and live: the Wurundjeri Woi-wurrung and Bunurong peoples (Burnley, Fishermans Bend, Parkville, Southbank and Werribee campuses), the Yorta Yorta Nation (Dookie and Shepparton campuses), and the Dja Dja Wurrung people (Creswick campus).

The University also acknowledges and is grateful to the Traditional Owners, Elders and Knowledge Holders of all Indigenous nations and clans who have been instrumental in our reconciliation journey.

We recognise the unique place held by Aboriginal and Torres Strait Islander peoples as the original owners and custodians of the lands and waterways across the Australian continent, with histories of continuous connection dating back more than 60,000 years. We also acknowledge their enduring cultural practices of caring for Country.

We pay respect to Elders past, present and future, and acknowledge the importance of Indigenous knowledge in the Academy. As a community of researchers, teachers, professional staff and students we are privileged to work and learn every day with Indigenous colleagues and partners.

# Welcome and Introductions



**Gwenda  
Thomas**

Director Scholarly  
Services and  
University Librarian

Student and  
Scholarly Services



**Ruth  
Baxter**

Associate Director,  
Collection Development  
and Access

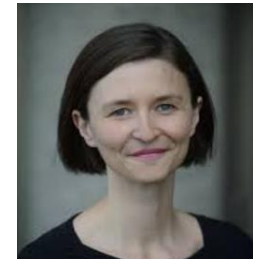
Student and Scholarly  
Services



**Kathryn  
Hore**

Associate Director,  
Archives and Special  
Collections, University  
Archivist

Student and Scholarly  
Services



**Georgie  
Meagher**

Senior Development  
Manager

Corporate  
Development

# Purpose and Agenda



## Purpose of Today

**Share** the vision and scope of Baillieu Library Infrastructure uplift.

**Explain** necessary changes in access to collections that will enable infrastructure works – offsite storage and change to access of Baillieu Special Collections.

**Answer** your questions.

## Agenda

1. **Baillieu Library Infrastructure Uplift: Vision and Scope**
2. **Offsite Storage**
3. **Baillieu Special Collections**
4. **Q&A**

# Baillieu Special Collections Infrastructure Uplift

LG, L1 and L3

Vision and Scope



THE UNIVERSITY OF  
MELBOURNE

# Program Context and Design Update



- The Scholarly Services Accommodation Master Plan (approved by Academic Board in 2020) included retaining the University's Special Collections at Parkville.
- In 2022-23, the Baillieu Library Special Collections project was included as part of the Estate Master Plan, to provide fire protection and secure storage for the Special Collections.
- A design team lead by ARM Architecture have been appointed and the project is underway.
- Design will continue through 2024, with project completion slated for 2027.



# Design References

## Design References

**Special Collections- Select Items**

There were a number of pages within the collection that were particularly vibrant, curious, historical or provoking. The illustrative techniques, patterns and colours are elements from which the team can extract and abstract points of design interest.



**Special Collections - General Heritage**

Heritage photographs shape the context and timeline from which the Ballieu Library Special Collections project has developed. They are an excellent reference for understanding the history of the University, championing select milestones and alumni and framing the design narrative.

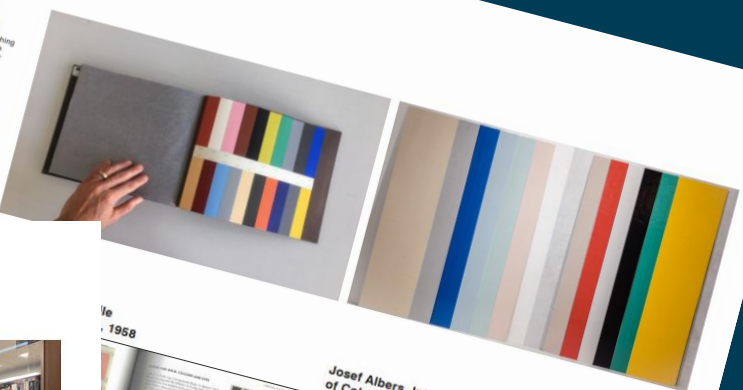


24 1647 BALLIEU LIBRARY SPECIAL COLLECTIONS

## Design References

**Le Corbusier Polychromy Colour Keyboards of 1959**

Using reference from the year 1959, A&M has been reinterpreting Le Corbusier's 1959 Colour Keyboards. These keyboards are a series of homogeneous colour palettes curated from 20 select colours.



## Design References

### Timber

There is a vast amount of original timber framing, joinery, detailing and door hardware throughout the Library. The timber lends a valued warmth and heritage sensibility to the overall architectural language. Some components in particular, such as the large round door handles and key sections of framing, would ideally be retained but will need to be updated to meet current DDA requirements.

### Timber Framing Throughout



### Timber Trims



### Timber Door Handles



### Key Elements

The incredible sculpture by Norma Redpath, located in the Ground Floor Entry Foyer, was commissioned specifically for the opening of the Ballieu Library in 1959. It is highly valued by the University community and stands as an evocative representation of the Library's Mid-Century identity. The sculpture will remain in place and has been re-interpreted into a key design feature of the Reading Room.

The large star shaped pendant which hangs in the double height space of the Multi-purpose room will be cleaned and restored with the potential for the addition of so-lighting. It is another highly valued Mid-Century element of the Library.

### Ground Floor Entry Foyer Norma Redpath Sculpture, Areopagitica, 1959



### Multi-Purpose Room Pendant Light Fitting



Ve  
1958

**Josef Albers, Interaction of Colour, 1963**



# Leigh Scott Room (Multi Purpose Space)



DRAFT



Artist Impression

# Informal Learning Level 1 North



*Artist Impression*

# Informal Learning Level 1 South



*Artist Impression*

# Informal Learning Level 1 South



*Artist Impression*

# Reading Room Level 1



ARM  
ARCHITECTURE

DRAFT



ARM  
ARCHITECTURE

DRAFT

Artist Impression

# Object Based Learning Level 1



*Artist Impression*

# Research Commons Level 3



*Artist Impression*

# Research Commons Level 3



*Artist Impression*

# Offsite Storage of Select Baillieu Collections

Consultation, Program  
and Process Update

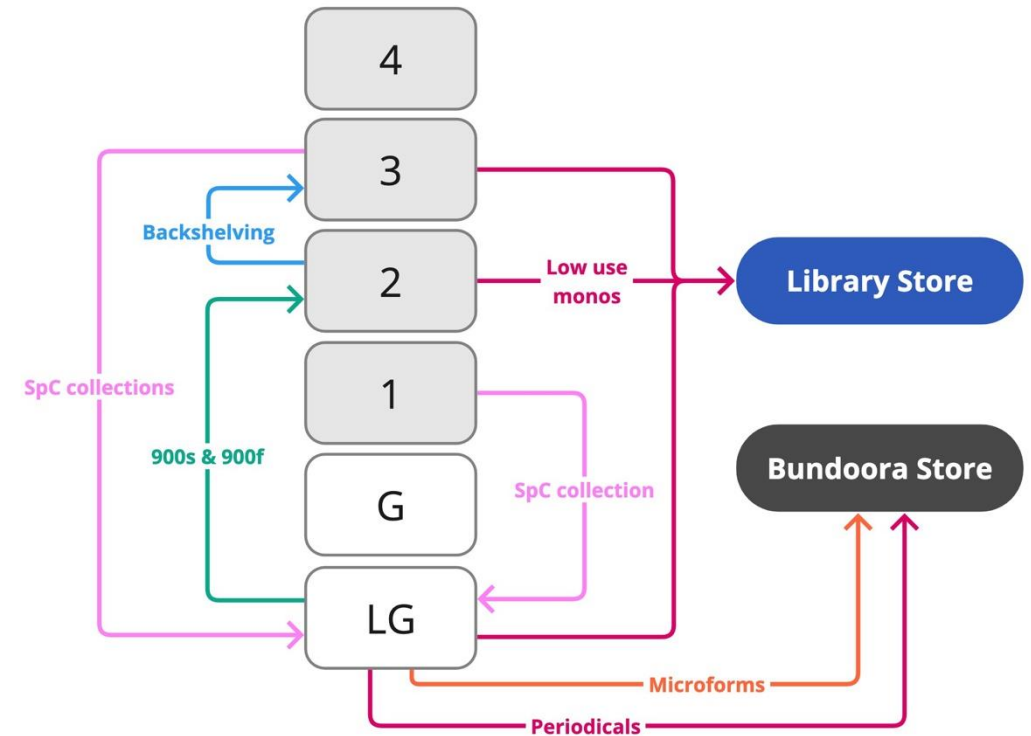


THE UNIVERSITY OF  
MELBOURNE

# Academic Consultation: Overview



- In June 2024, a 6-week academic engagement initiative sought to understand if proposed offsite relocation of Baillieu Library's low-use general collections, print periodicals and microfiche/microfilm would impede on teaching, learning and research.
- The focus of this engagement was with Faculty of Arts and Faculty of Fine Arts and Music, however all faculties were provided the opportunity to provide feedback.
- MDHS Teaching & Learning Committee briefing and presentation about building projects.



# Clear Feedback Themes and Considerations



---

## **Poor browsing and discoverability will impede academic research and teaching**

The University library catalogue is designed to facilitate comprehensive searches across the breadth of the collections, including items that are currently checked out, stored offsite, digitised, or located in other branches.

This enhanced catalogue experience goes beyond traditional browsing, enabling online discovery of related collections.

---

## **Print materials are a requisite of libraries**

To ensure an optimal library service for our students and staff, the library must provide both collections and adequate seating. While demand for digital resources is increasing exponentially, the University continues to acquire print materials.

Consistent review of shelved collections to transfer low-use items from all University libraries to offsite storage is an ongoing need. COVID lockdown reduced the opportunity for an annual weed and increased onsite holdings.

---

## **A 2-business day retrieval period is too long**

A 2-business day retrieval period was agreed to be reasonable when considering that items on library shelves are not always guaranteed to be available.

# Outcome of Consultation

**Although the transition to offsite storage alters access to these collections, it was determined that the overall impact will be minimal and manageable.**

- We are confident that teaching, learning and research needs can continue to be effectively met through forward planning, digitisation and the library's comprehensive digital library catalogue.

**This change ultimately provides invaluable dedicated space to safeguard the library's Special Collections.**

# Relocation Program and Process



## Key Dates

### Commences

Quiet 2024/2025 Summer period

### Expected Conclusion

End of Q2 2025

## PROCESS

- Phase 1:
  - Focus on the general collections, selecting titles off open shelves across the LG, L2 and L3 to relocate to offsite storage.
  - The gaps on the shelves due to this process will then be consolidated across L2 and 3 and allow space for material from basement to move up to L2.
  - **“Back shelving”** allows us to relocate the collection in the 900 range on the LG to shelves on L2, enabling the commencement of Special Collections construction works to the LG.
  - This may result in some Dewey (subject) areas moving to new locations across L2 and 3. Collections will remain in Dewey order and signage of new locations will be updated.
  - We will aim for library catalogue updated and collections to be accessible within two business days of their relocation.
  - Removalists with relevant experience will work closely with Collection Access and Development staff.
- Phase 2: Relocation of periodicals, microforms and other small collections in the Baillieu basement (Lower Ground floor) e.g. elephant folios

# FAQs



## Why can't these collections move to another library on campus?

Most of our library branches are already stretched to meet the needs of their own collections and informal study seating. A number of branch libraries have moved low use materials to off-site storage for many years now.

## Is there a detailed list of items moving offsite?

No, there is no detailed list that can be shared. The library catalogue offers the best up-to-date information of where collections are located.

## How was it determined which collections were 'low use'?

When the space required was determined, we calculated the amount of books for relocation to off-campus storage, in order to create space on Baillieu shelves. We identified from our catalogue database sufficient items that have not been borrowed since a set date e.g. 2014, in order to fit the materials into the shelf space available.

**More FAQs can be found on the [Special Collections Information Page](https://about.unimelb.edu.au/priorities-and-partnerships/campus-development/baillieu-special-collections)**

<https://about.unimelb.edu.au/priorities-and-partnerships/campus-development/baillieu-special-collections>

# Baillieu Special Collections

Temporary Disruption  
in Access and How to  
Make Alternative  
Arrangements



THE UNIVERSITY OF  
MELBOURNE

# Context and Program



## Key Dates

### Disruption to Access

*Approximately S2 2025 to  
S2 2026*

### Digitisation and Alternative

### Arrangement Period

*NOW – 14 February 2025*

## PROTECTION VIA TEMPORARY STORAGE

- Special Collections will be rehoused within the Baillieu Library in a fit-for-purpose storage environment with fire protection, security and environmental controls commensurate with their value and significance.
- **Special Collections will be stored safely within the Baillieu Library** to prepare for their relocation, restricting access to materials from *approximately* Semester 2 2025 to Semester 2 2026.
- **The Reading Room will remain open** for research with the Archival collections while the Special Collections are temporarily unavailable during the move.
- Academic staff and researchers are being offered alternative arrangements.

# Alternative Arrangements



**1. Prior Digitisation of Materials:** The library team can create digital surrogates that offer the best alternative for teaching, learning and research purposes.

- This work takes time and must occur well in advance of Semester 2 2025.
- On-demand digitisation will not be possible as collections will be inaccessible.

**2. Use of Existing Archival Material and UMA Collections:** Where relevant, we encourage utilising archival materials, which will remain fully accessible for research and teaching.

**3. Collection-Agnostic Teaching Support:** This may include:

- **Visual Thinking Practices:** Engaging students with available materials (from archives or digital surrogates) to explore how they visually communicate complex ideas.
- **Peer-to-Peer Engagement:** Facilitating discussions where students compare available collection materials.
- **Vocational Skills Development:** Teaching students how to interpret, exhibit, handle, preserve, and communicate the significance of artworks and collection items using accessible resources.
- **Curator Expertise:** Curators can prepare in advance and bring their expertise to classes, possibly using digital surrogates as reference materials.

# Preparations Commencing Now



**Academic staff and researchers must identify their preferred alternative arrangements as soon as possible to allow adequate planning for Semester 2, 2025.**

- Alternative arrangements must be submitted by 14 **February 2025**. Requests received after this date may not be accommodated.
- Due to the rare and fragile nature of Special Collections, they must be stored in environmentally controlled and highly secure conditions, and handled with care. For this reason we must restrict access to the collection during the move and individual items may not be accessible for teaching, learning and research.

**The Archives and Special Collections team will assist in establishing the best alternative arrangement.**

- [Kathryn Hore](#), Associate Director, Archives and Special Collections will be the main contact.

# FAQs



## What if I teach courses where student outcomes and assessments depend on access to Special Collections?

If none of the alternative arrangements are suitable for your classes, and the temporary collection closure will significantly impact the student experience, with risks to learning outcomes and assessments, please contact Kathryn Hore.

## When will the Special Collections Redevelopment be complete?

The Special Collections Redevelopment is expected to be completed in Q4, 2026.

## Why do the Special Collections need to move with such care?

The Baillieu Special Collections comprise of the Rare Books, Rare Music, Prints & Drawings, Rare Maps and Rare East Asian collections, which date from the 8th century through to the present day. They represent collections of high value, rarity, fragility and significance, with objects that are often unique and irreplaceable.

More FAQs can be found on the [Special Collections Information Page](https://about.unimelb.edu.au/priorities-and-partnerships/campus-development/baillieu-special-collections)

<https://about.unimelb.edu.au/priorities-and-partnerships/campus-development/baillieu-special-collections>

# Further Information



**Special Collections  
Information  
Webpage, with FAQs**

The [Special Collections Information Webpage](#) outlines:

- Vision of Baillieu Library Redevelopment
- Change in access to collections (offsite storage and Special Collections)
- Extensive FAQs

**Queries**

If you have specific questions you would like answered, please contact:

- **Offsite storage** – [Ruth Baxter](#), Associate Director, Collection Development and Access
- **Special Collections** - [Kathryn Hore](#), Associate Director, Archives and Special Collections

# Questions?



THE UNIVERSITY OF  
MELBOURNE